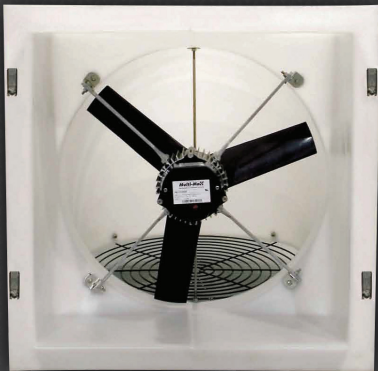
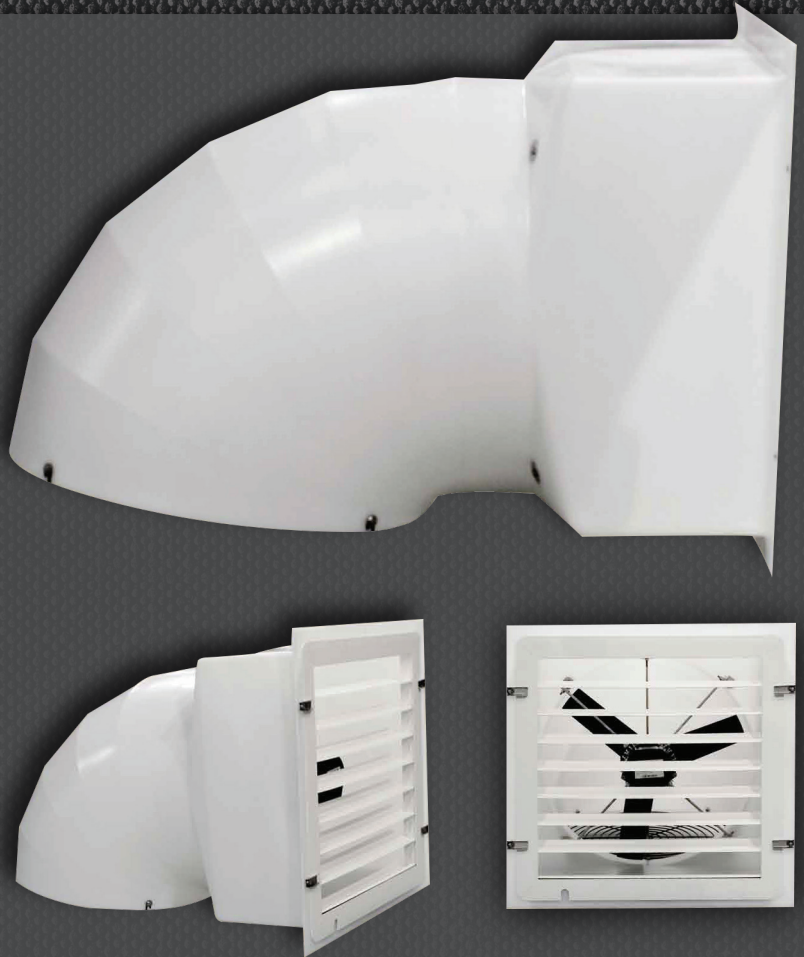




MONOCOQUE FANS

Offer superior minimum ventilation performance for variable speed fan stages

- Aerodynamic design and smooth corners minimize air turbulence and optimize fan performance.
- Mounted in one piece, the hood resists to impacts caused by snowfall or icefall from the roof. It also prevents water and dirt infiltration in the walls.
- The hood outlet diameter is greater than the fan propeller diameter, allowing for unrestricted airflow through the hood.
- In order to prevent dust and dirt from accumulating on the exterior lining of the building, the hood outlet has been moved away from the wall of 7 to 9 inches depending on the model. It offers also the advantage of lowering the impact of wind on the CFM output.
- Monocoque's slant wall design drains outside the building any water resulting from condensation, preventing the freezing of the blades.
- Exit safety grill is baked enamel for corrosion resistance.



Available from 12" to 24" diameter

- Monocoque available with either Multifan's new Multi-Max motor or Marathon.
- Stainless steel hardware for long lasting performance.
- Polypropylene propellers offer durability, precise balance and help to avoid the humidity to condense and freeze the blades.
- Propeller pitch and motor are closely matched to provide maximum CFM output and best CFM / Watt possible.



MONOCOQUE FANS

Multi-Max motors

- Smooth variable speed curve.
- Class F insulation with the first layer of coating baked for improved protection.
- C4 Bearings offer durability against heat generated from triac in the ventilation controller.
- Temperature rating from -40°C to 155°C.
- 3 year of complete warranty on parts.



Shutters



Winter cover

Shutters and Winter cover

- PVC shutters are available in white or black.
- Shutters mount flush on the inside of the building.
- Shutters open easily when fans are running on low speed.
- Insulated winter covers replace the shutter during winter months if the fan is not required to operate.

Specifications for Multi-Max motors

Dia.	HP	Voltage	Amp	RPM	Drive	Blade	Wall opening	CFM @ .05" sp
12"	0,09	240	0,6	1670	Direct	6	14 1/2" X 14 1/2"	1245
14"	0,17	240	1,3	1570	Direct	6	16 1/2" X 16 1/2"	1885
16"	0,17	240	1,3	1570	Direct	6	18 1/2" X 18 1/2"	2600
18"	0,34	240	2,0	1570	Direct	6	20 1/2" X 20 1/2"	3188
18"	0,26	240	1,8	1040 - Quiet	Direct	4	20 1/2" X 20 1/2"	3095
20"	0,50	240	2,3	1640	Direct	6	22 1/2" X 22 1/2"	4565
24"	0,50	240	3,3	1640	Direct	3	26 1/2" X 26 1/2"	6015
24"	0,62	240	3,2	1080 - Quiet	Direct	5	26 1/2" X 26 1/2"	5895

3 year warranty • Plastic blade for all fans • 4 motor stands in rigid aluminum to prevent any vibration

Specifications for Marathon motors

Dia.	HP	Voltage	Amp	RPM	Drive	Blade	Wall opening	CFM @ .05" sp
12"	1/6	115 / 230	2,0 / 1,0	1625	Direct	6	14 1/2" X 14 1/2"	1150
14"	1/4	115 / 230	3,6 / 1,8	1625	Direct	6	16 1/2" X 16 1/2"	1775
16"	1/4	115 / 230	3,6 / 1,8	1625	Direct	6	18 1/2" X 18 1/2"	2575
18"	1/3	115 / 230	3,8 / 1,9	1625	Direct	6	20 1/2" X 20 1/2"	3225
20"	1/3	115 / 230	3,8 / 1,9	1625	Direct	6	22 1/2" X 22 1/2"	4050
24"	1/2	115 / 230	5,4 / 2,7	1625	Direct	4	26 1/2" X 26 1/2"	5850

1 year warranty • Horizontal shelf in aluminum to support the motor, offering superior stability while minimizing air restriction

GSI GROUP



GSI Electronics Inc.

5200 Armand-Frappier, St-Hubert (Quebec) Canada J3Z 1G5
Toll free: 877-926-2777 www.gsi-electronics.com
gsie_info@agcocorp.com

Authorized dealer:

Due to continual improvements, GSI Electronics Inc. reserves the right to change pricing and specifications without notice. 6017 REV.01